

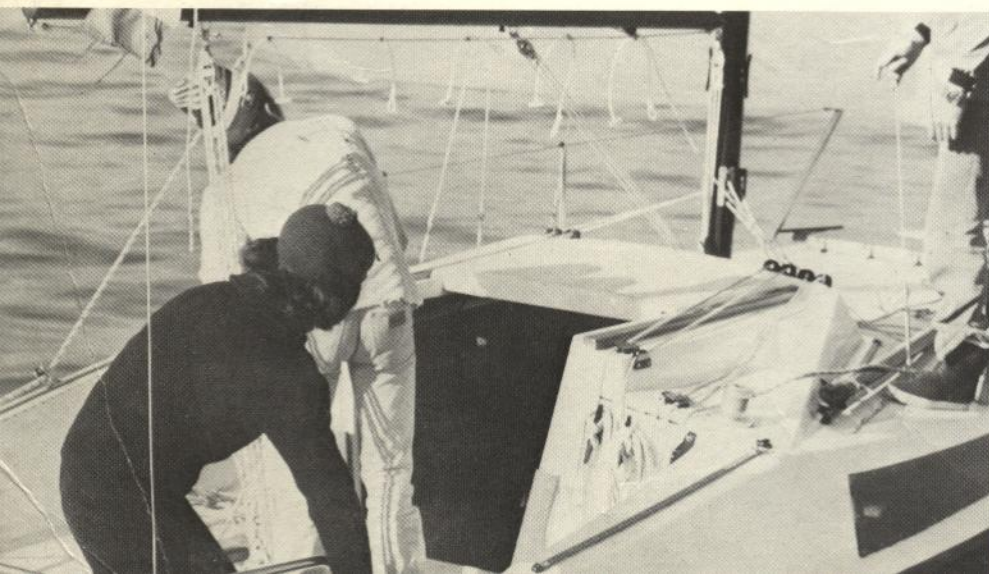
PIVIERE 6.60





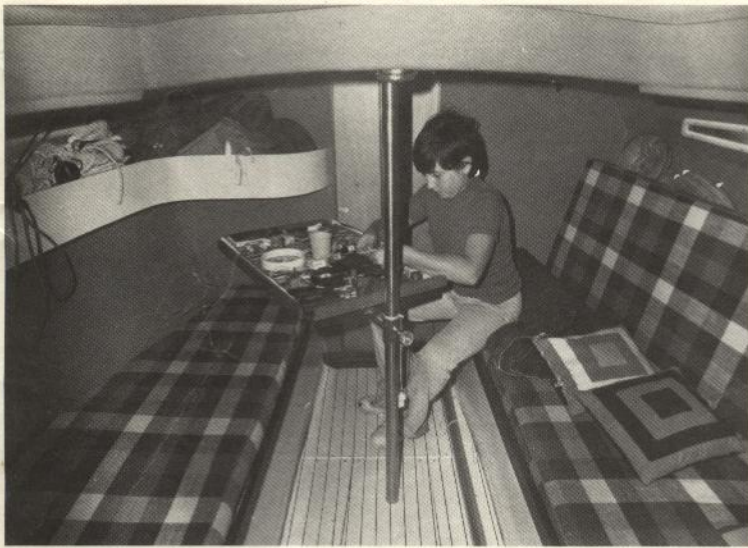
PIVIERE 6.60

progetto: ALDO RENAI



DATI TECNICI TECHNICAL DATA

L. F. T. L. O. A.	mt. 6,60
L. gall. L. W. L.	mt. 6,00
La. Beam	mt. 2,40
Immersione Draft	mt. 1,10
Peso Weight	Kg. 1.250
Zavorra Ballast	Kg. 400



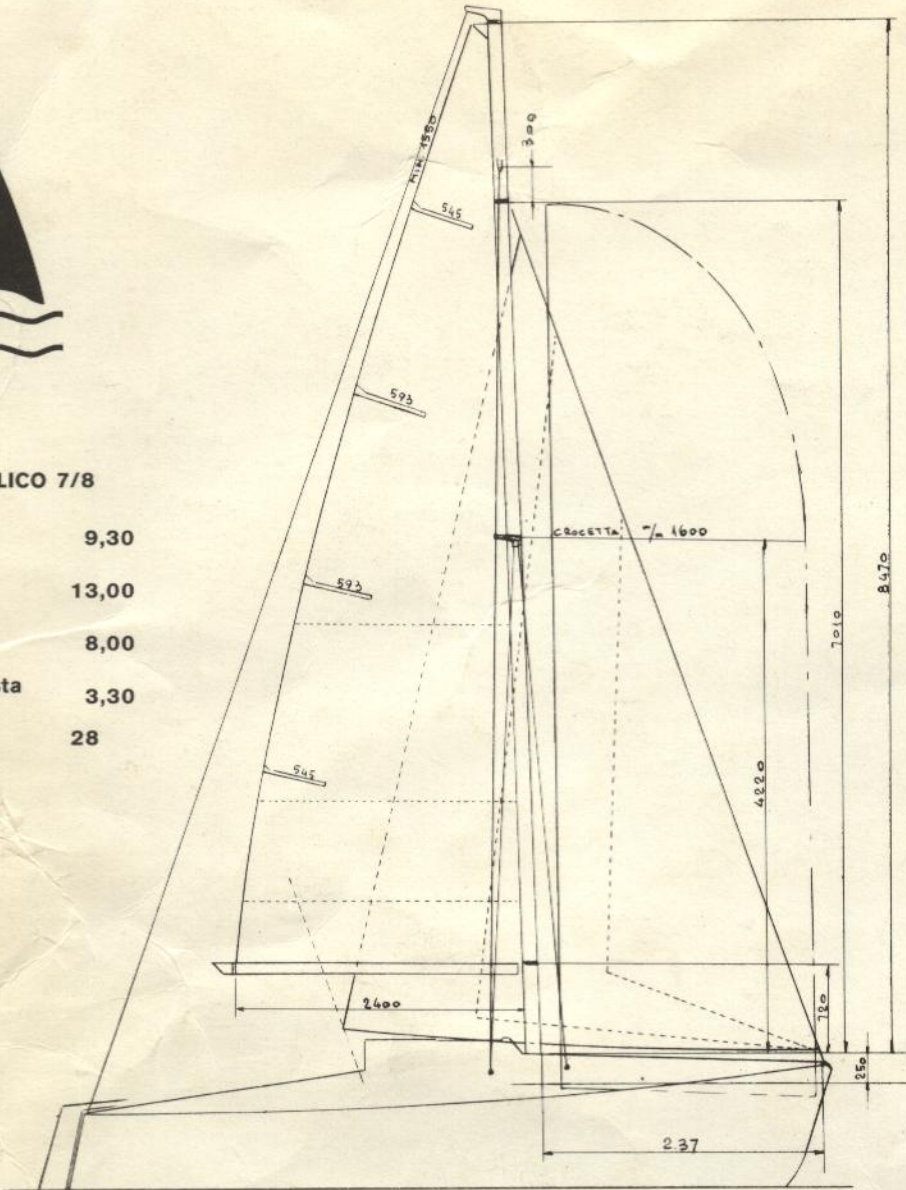
Agente:





PIANO VELICO 7/8

Randa Main sail	9,30
Genova Genoa	13,00
Fiocco 1 Jib 1	8,00
Fiocco tempesta Storm Jib	3,30
Spinnaker	28



PIANO VELICO T. A.

Randa Main Sail	10,00
Genova Genoa	15,10
Fiocco 1 Jib 1	12,60
Fiocco 2 Jib 2	7,20
Fiocco 3 Storm Jib	4,40
Spinnaker	35

*cu. 2 = 6 mt.
Scale 1:50*

